

# Guidelines for 2026 Fall UNIST Graduate Admissions [For International Applicants]



## Schedule for 2026 Fall Entry

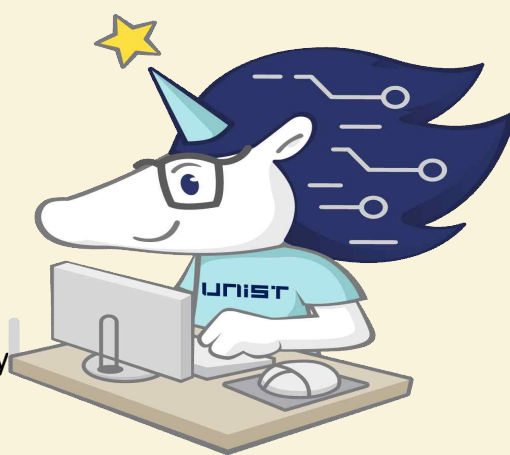
Online Application	April 6 <sup>th</sup> , 10:00 ~ 15 <sup>th</sup> , 2026 18:00
Document Submission	April 6 <sup>th</sup> , 10:00 ~ 16 <sup>th</sup> , 2026 18:00
Announcement for 1 <sup>st</sup> Stage	<b>May 21<sup>st</sup>, 2026 14:00</b>
Interview	May 25 <sup>th</sup> ~ June 4 <sup>th</sup> , 2026
Announcement of Final Candidate	<b>June 23<sup>rd</sup>, 2026 14:00</b>
Registration	June 23 <sup>rd</sup> , 14:00 ~ 29 <sup>th</sup> , 2026 18:00

**UNIST Graduate Admissions Team**

## Check points for Applicants

This guideline is for 2026 Fall Entry applicants at UNIST Graduate Program.

- ▷ The guideline only includes contents related with admission, please check the website for more details of UNIST.
- ▷ The online application process finalizes after the applicant uploads all required documents.
  - Document Submissions end on **April 16<sup>th</sup>, 2026, 18:00** (Modifying documents are allowed only within the submission period.)
  - Graduates must submit their transcript after the date of graduation.
  - Applicants are fully responsible for the contents of their application and may be disadvantaged if there are incorrect information / errors and omissions in the application.
  - Applicants who fail to comply with the noticed process or does not submit all required documents will be disqualified as incomplete submission/documents. Also, applicants who fail to appear the interview process will be disqualified.
- ▷ Application Fee is 50,000 KRW (Including online application commission 5,000 KRW), which included the 1<sup>st</sup> stage evaluation, the interview evaluation is not charged. (Application fee is not refundable.)
- ▷ **All documents** issued abroad (Diploma, Certificate, etc) must be submitted in **English or Korean**. In case the document is issued in a third language, please submit an English translated version notarized.
- ▷ We recommend that all applicants finalize the application process before the final hour of the deadline to avoid network congestion and make sure the application has been successfully submitted.
- ▷ All submitted documents will not be returned in any circumstances.



**Admission Q&A: [adm-g@unist.ac.kr](mailto:adm-g@unist.ac.kr) ☎ +82-52-217-1190**

## ☐ Admissions Schedule

Section	2026 Spring 1 <sup>st</sup>	2026 Spring 2 <sup>nd</sup>	2026 Fall
Online Application	July 7 <sup>th</sup> , 10:00 ~ 16 <sup>th</sup> , 2025 18:00	October 13 <sup>th</sup> , 10:00 ~ 22 <sup>nd</sup> , 2025 18:00	April 6 <sup>th</sup> , 10:00 ~ 15 <sup>th</sup> , 2026 18:00
Document Submission	July 7 <sup>th</sup> , 10:00 ~ 17 <sup>th</sup> , 2025 18:00	October 13 <sup>th</sup> , 10:00 ~ 23 <sup>rd</sup> , 2025 18:00	April 6 <sup>th</sup> , 10:00 ~ 16 <sup>th</sup> , 2026 18:00
Announcement for 1 <sup>st</sup> Stage Result	August 21 <sup>st</sup> , 2025 14:00	November 27 <sup>th</sup> , 2025 14:00	May 21 <sup>st</sup> , 2026 14:00
Interview	August 25 <sup>th</sup> ~ September 3 <sup>rd</sup> , 2025	December 1 <sup>st</sup> ~ 10 <sup>th</sup> , 2025	May 25 <sup>th</sup> ~ June 4 <sup>th</sup> , 2026
Announcement for Final Candidates	September 23 <sup>rd</sup> , 2025 14:00	December 24 <sup>th</sup> , 2025 14:00	June 23 <sup>rd</sup> , 2026 14:00
Registration	September 23 <sup>rd</sup> , 14:00 ~ 29 <sup>th</sup> , 2025 18:00	December 24 <sup>th</sup> , 14:00 ~ 30 <sup>th</sup> , 2025 18:00	June 23 <sup>rd</sup> , 14:00 ~ 29 <sup>th</sup> , 2026 18:00
Announcement of Scholarship Selection	After Registration Period of 2026 Spring 2 <sup>nd</sup> (UNIST → Government)		After Registration Period of 2026 Fall (UNIST → Government)

※ The dates noted above are tentative, and can be changed without prior notice.

※ Interview will be noticed to each applicant by each department after the Announcement of 1<sup>st</sup> Stage Result.

※ Announcement of Scholarship Selection 1: For the final candidates among UNIST Scholarship, they will be able to enter after changing to Government Scholarship category depending on each priority.

※ Announcement of Scholarship Selection 2: Only internally selected programs are available for such selection

※ **All Final Candidates must register and submit all required documentations. (Check P. 11)**

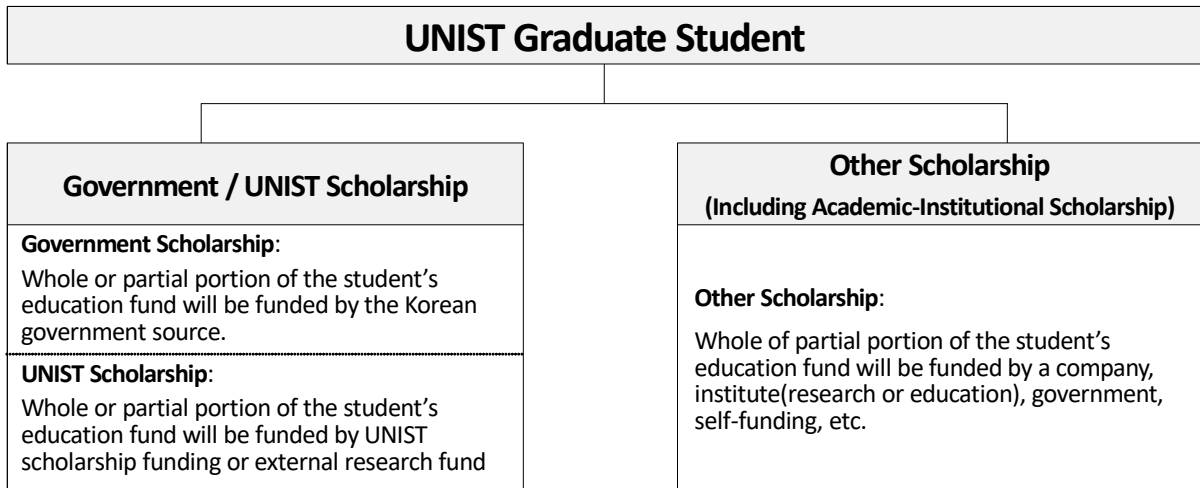
※ **(Important) All applicants are responsible for any disadvantages by applying without checking the details of the guidelines.**

## ☐ 2026 Graduate Admission Quota

▶ Total: Approximately 750 (The quota may change depending on circumstances.)

## ❑ Student Classification (Scholarship)

- ▶ UNIST Graduate Students will be classified by Government Scholarship Student / UNIST Scholarship Student / Other Scholarship Student depending on the source of the scholarship.



## ❑ Eligibility (Level of Education)

### ▶ Master's / Combined Master's-Doctor Program

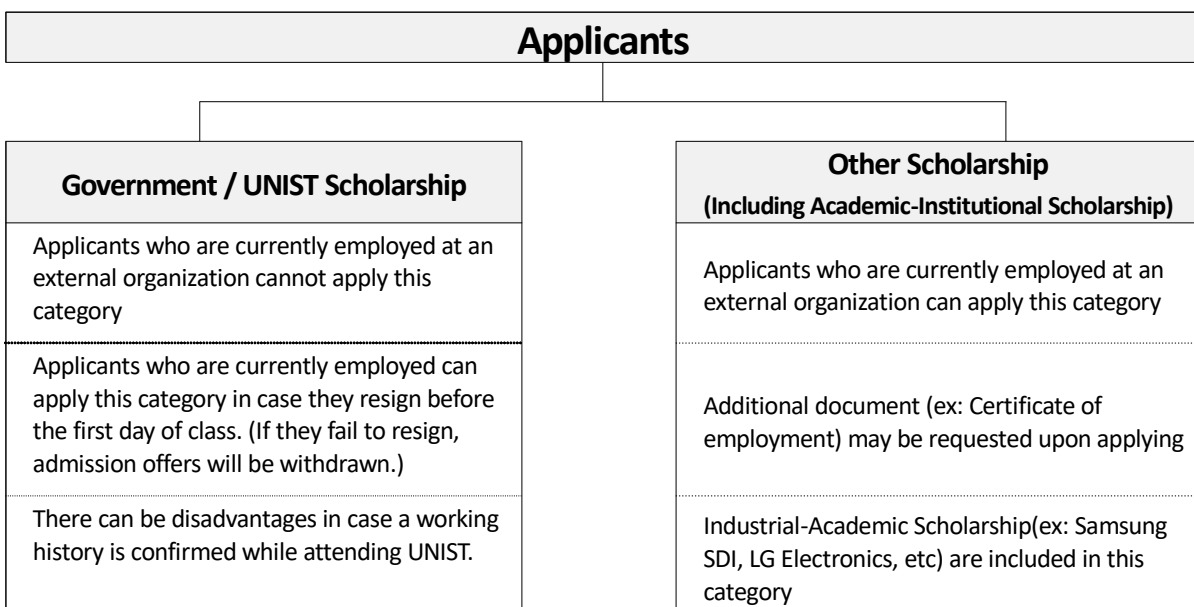
- Applicants who have a bachelor's degree or will be awarded a bachelor's degree by the first day of class or who received an educational background equivalent to the above

※ "Health Innovation and Entrepreneurship" major only accepts applicants who have 'Medical Doctor Degree'

### ▶ Doctor Program

- Applicants who have a Master's degree or will be awarded a Master's degree by the first day of class or who received an educational background equivalent to the above.

### ▶ Caution for Applicants



## □ Academic Programs

College	Department	Application Unit	Master			Combined Master-Doctor			Doctor			
			Gov't	UNIST	Other	Gov't	UNIST	Other	Gov't	UNIST	Other	
Engineering	Mechanical Engineering	Mechanical Engineering	○	○	○ <sup>(A1)(F)(H)</sup>	○	○	○ <sup>(A1)</sup>	○	○	○ <sup>(A1)</sup>	
	Graduate School of Semiconductor Materials and Devices Engineering	Semiconductor Materials and Devices Engineering	○	○	○ <sup>(G)</sup>	○	○	○ <sup>(G)</sup>	○	○	○ <sup>(G)</sup>	
	Materials Science and Engineering	Materials Science and Engineering	○	○	○ <sup>(G)</sup>	○	○	○ <sup>(G)</sup>	○	○	○ <sup>(G)</sup>	
	Energy and Chemical Engineering	Energy and Chemical Engineering	Energy Engineering	○	○	○ <sup>(A1)(A2)(F)(G)</sup>	○	○	○ <sup>(A1)(A2)(G)</sup>	○	○	○ <sup>(A1)(G)</sup>
			Energy Engineering (Battery Science & Technology)									
			Chemical Engineering									
	Nuclear Engineering	Nuclear Engineering	○	○	○	○	○	○	○	○	○	
	Civil, Urban, Earth, and Environmental Engineering	Urban Infrastructure Engineering	Urban Infrastructure Engineering	○	○	○ <sup>(G)</sup>	○	○	○ <sup>(G)</sup>	○	○	○ <sup>(G)</sup>
		Water-Energy Nexus	Water-Energy Nexus	×	○ <sup>(C)</sup>	×	×	○ <sup>(C)</sup>	×	×	○ <sup>(C)</sup>	×
		Disaster Management Engineering	Disaster Management Engineering	○	○	○ <sup>(G)</sup>	○	○	○ <sup>(G)</sup>	○	○	○ <sup>(G)</sup>
		Environmental Science Engineering	Environmental Science Engineering	○	○	○ <sup>(G)</sup>	○	○	○ <sup>(G)</sup>	○	○	○ <sup>(G)</sup>
Carbon Neutrality	Carbon Neutrality(Energy Engineering)	Carbon Neutrality(Energy Engineering)	○	○	○	○	○	○	○	○	○	
	Carbon Neutrality(Chemical Engineering)	Carbon Neutrality(Chemical Engineering)	○	○	○	○	○	○	○	○	○	
	Carbon Neutrality(Environment)	Carbon Neutrality(Environment)	○	○	○	○	○	○	○	○	○	
Information and Biotechnology	Design	Design	○	○	○ <sup>(H)</sup>	○	○	○	○	○	○	
	Biomedical Engineering	Biomedical Engineering	○	○ <sup>(B)</sup>	○ <sup>(H)</sup>	○	○ <sup>(B)</sup>	○	○	○ <sup>(B)</sup>	○	
	Industrial Engineering	Industrial Engineering	○	○	○ <sup>(H)</sup>	○	○	○	○	○	○	
	Biological Sciences	Biological Sciences	○	○	○	○	○	○	○	○	○	
	Graduate School of Health Science and Technology	Health Science and Technology	Health Science and Technology	○	○	○	○	○	○	○	○	○
		Health Innovation and Entrepreneurship <sup>(E)</sup>	Health Innovation and Entrepreneurship <sup>(E)</sup>	×	○	○	×	×	×	×	×	×
	Graduate School of Artificial Intelligence	Artificial Intelligence	○	○	○ <sup>(H)</sup>	○	○	○	○	○	○	
	Electrical Engineering	Electrical Engineering	○	○	○ <sup>(A1)(F)(H)</sup>	○	○	○ <sup>(A1)</sup>	○	○	○ <sup>(A1)</sup>	
	Computer Science and Engineering	Computer Science and Engineering	○	○	○ <sup>(H)</sup>	○	○	○	○	○	○	
ICT Convergence Master's Degree	ICT Convergence	×	×	○ <sup>(D)</sup>	×	×	×	×	×	×		
Natural Sciences	Physics	Physics	○	○	○	○	○	○	○	○	○	
		Applied Physics	○	○	○	○	○	○	○	○	○	
	Mathematical Sciences	Mathematical Sciences	○	×	×	○	×	×	○	×	×	
	Chemistry	Chemistry	○	○	○	○	○	○	○	○	○	
Business Administration		Management Engineering	○	○	○	○	○	○	○	○	○	

- ※ Names of academic programs are subject to change.
- ※ For those whom applied as Government/UNIST Scholarship, the scholarship type & benefits will be decided depending on the evaluation result.
- ※ **'Semiconductor Materials and Devices Engineering' major does not accept foreign students as a policy.**
- ※ School of Energy and Chemical Engineering recruits applicants by integrating the application unit into the Energy Chemical Engineering major, and then assigns a major at the time of admission.
- ※ Applicants for the Institutional Scholarship Admission(who selected 'Academic-Institutional Scholarship' as the scholarship type when applying) may change their scholarship type according to UNIST's admissions evaluation process and be ultimately accepted as a 'Government Scholarship' or 'UNIST Scholarship'. (IBS Neuroscience Inter-Institutional Scholarship candidates will be entering as UNIST Scholarship.)
- ※ **Notice of Academic-Institutional Scholarship**  
(Category A1, A2, F, H only receives applicants with Korean Nationality.)

Category	Admission Program / Major	Department	Student Classification	Note
A1	SK ON Program	Mechanical Engineering Energy and Chemical Engineering Electrical Engineering	Academic Industrial	<ul style="list-style-type: none"> <li>• Refer to [Attachment 1]</li> </ul>
A2	Posco Future M Program	Energy and Chemical Engineering (e-battery track)	Academic Industrial	<ul style="list-style-type: none"> <li>• Refer to [Attachment 3]</li> </ul>
B	UNIST-IBS Neuroscience Program	Biomedical Engineering	Academic Industrial	<ul style="list-style-type: none"> <li>• Candidates will enter as 'UNIST Scholarship</li> <li>• Refer to [Attachment 2]</li> </ul>
C	Water- Energy Nexus Major	Water-Energy Nexus (Civil, Urban, Earth, and Environmental Engineering)	Government/UNIST	<ul style="list-style-type: none"> <li>• Supported by MOE [Graduate School specialized in Integrated Water Resources Management] program</li> <li>• Candidates will enter as 'UNIST Scholarship</li> </ul>
D	ICT Convergence Master's Program	ICT Convergence	Others	<ul style="list-style-type: none"> <li>• Eligibility: Employees at small &amp; medium-sized business in Ulsan/Busan/Gyeongnam</li> <li>• Refer to [Attachment 4]</li> </ul>
E	Health Innovation and Entrepreneurship Major	Health Innovation and Entrepreneurship (Graduate School of Health Science and Technology)	UNIST/Others	<ul style="list-style-type: none"> <li>• Only applicants who have a 'Medical Doctor Degree' could apply 'Health Innovation and Entrepreneurship'.</li> </ul>

F	Samsung SDI Program	Mechanical Engineering Energy and Chemical Engineering Electrical Engineering	Academic Industrial	<ul style="list-style-type: none"> <li>• Refer to [Attachment 5]</li> </ul>
G	KICET Program	Urban Infrastructure Engineering Environmental Science Engineering Disaster Management Engineering Materials Science and Engineering Semiconductor Materials and Devices Engineering Energy and Chemical Engineering	Academic Industrial	<ul style="list-style-type: none"> <li>• Refer to [Attachment 6]</li> </ul>
H	LG Electronics HS&ES Program	Mechanical Engineering Design, Industrial Engineering Biomedical Engineering Artificial Intelligence Electrical Engineering Computer Science and Engineering	Academic Industrial	<ul style="list-style-type: none"> <li>• Eligibility: Only for applicants who are accepted by LG Electronics</li> <li>• Refer to [Attachment 7]</li> </ul>

## ☐ Required Documents

No	List	Master	Combined Master - Doctor	Doctor	Note	
1	Application Form	○	○	○		
2	Check list	○	○	○	UNIST Form 1	
3	Transcripts of Bachelor's Degree	○	○	○	Transfer student must submit transcripts from all universities they attended.	
4	Transcripts of Master's Degree	X	X	○		
5	Diploma(Certificate) of Bachelor's Degree	○	○	○	1. Expected to Graduate: Submit Certificate of Expected Graduate / Certificate of Enrollment 2. Substitute with Degree Certificate, Degree 3. Check [Important Notice for Submitting Transcript and Diploma]	
6	Diploma(Certificate) of Master's Degree	X	X	○		
7	Study Plan and Personal Statement	○	○	○	UNIST Form 2	
8	English Test Report (Korean Nationality)	Energy and Chemical Engineering	○	○	○	1. Those who fulfill exemption requirements are waived. 2. In case inputted in the application form, you must submit the report.
		Other Programs	△	△		
	English Test Report (Foreign Nationality)	○	○	○		
9	Proof of Excellence	△	△	△	Optional	
10	Recommendation from External Organization	Essential for other scholarship whom are supported by employed organization: UNIST Form 3				
11	Certificate of Employment(expected)	1. Essential for ICT Convergence Master's Degree 2. Optional for Other Scholarship Applicants				
12	Certificate of small and medium-sized business	Essential for ICT Convergence Master's Degree				

※ ○: Essential, △: Optional, X: Not needed

※ Transfer students must submit both attended universities transcript. (Online application: Input final attended university & GPA)

※ ICT Convergence Master's Degree must submit both Certificate of Employment and Certificate of small and medium-sized business.

- Certificate of Employment: Must be issued within one month prior to the application deadline.

- Certificate of Verification for SMEs: The certificate must remain valid until the final announcement date of successful applicants for the respective admission process.

※ Important Notice for Submitting Transcript and Diploma

<b>[Graduate(expected) Domestic Universities]</b>		
Graduate	If Diploma registration number is included	Transcript acceptable (Submitting Diploma document is not necessary)
	If Diploma registration number is not included	Submit both Transcript(issued after graduation) & Diploma(Certificate of Graduation)
Expected	<ul style="list-style-type: none"> <li>• Submit both Transcript &amp; Certificate of Expected Graduate OR Certificate of Enrollment</li> <li>• Document Issue Date: Within 2 months from the start of the application period</li> </ul>	
<b>[Graduate(expected) Universities from oversea]</b>		
Graduate	English version: Submit both Transcript(issued after graduation) & Diploma(Certificate of Graduation)	
Expected	<ul style="list-style-type: none"> <li>• English Version: Submit both Transcript &amp; Certificate of Expected Graduate OR Certificate of Enrollment</li> <li>• Document Issue Date: Within 2 months from the start of the application period</li> </ul>	
<p>※ <i>In case the documents are not issued in English, please submit a notarized English(or Korean) translated version of the document</i></p>		

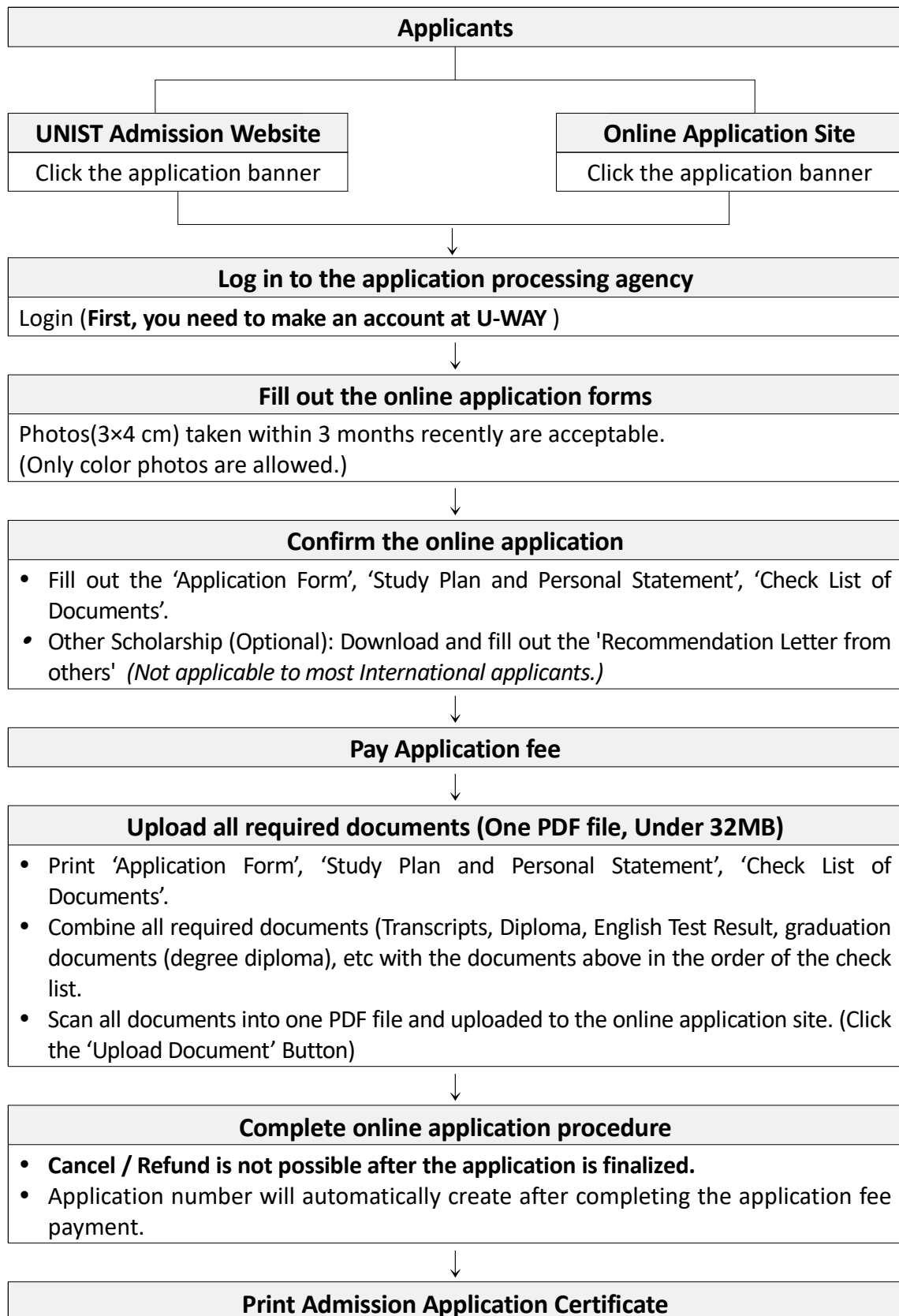
※ English Test Report(ETR)

- English proficiency test that is operated by official english test institution are only accepted
- Acceptable list of ETR  
: TOEIC, TOEIC S/W, TOEFL(Code: 8807), IELTS, TEPS(New TEPS), G-TELP, OPIc
- The test date shall be within 2 years of the online application deadline.
- Self-administered test by universities or institutions, such as TOEFL ITP, Duolingo English Test, IELTS Indicator, etc are not acceptable

<b>Exemption Requirements</b>
<ul style="list-style-type: none"> <li>• If you hold a citizenship from the country list below <b>OR</b></li> <li>• If you have physically studied and completed a Bachelor Degree or higher from the university in the country list below</li> </ul>
<p><i>[Country List]</i>  <i>Antigua and Barbuda, Australia, the Bahamas, Barbados, Belize, Canada, Dominica, Grenada, Guyana, Ireland, Jamaica, Malta, New Zealand, St Kitts, St Lucia, St Vincent, Trinidad and Tobago, U.K., U.S.A.</i></p>
<ul style="list-style-type: none"> <li>• If you submit a certificate issued from the university that notes your study's(Bachelor degree or higher) medium of instruction is English</li> <li>• If you are anticipated to graduate or graduated from UNIST's regular degree program. (Please submit an official transcript.)</li> </ul>

## □ Application Process

- ▶ Do not use Smartphone, Tablet PC, PDA while filling in and uploading at the online application site.



- ▶ Application Fee
  - Korean Nationality: 80,000 KRW (Online application commission 5,000 KRW)
  - Foreign Nationality: 50,000 KRW (Online application commission 5,000 KRW)
- ▶ Application Fee includes the 1<sup>st</sup> evaluation procedure, the interview evaluation is not charged.

- ▶ Only the applications that payment has been proceed is recognized as a valid applications. After the payment is done, an application number will be automatically create.
- ▶ It is not able to cancel or refund after the application number is created.
- ▶ You are able to reprint the admission application certificate in case you lost the document.

## ☐ Admission Procedure

### ▶ Evaluation

- 1<sup>st</sup> Stage(Document Evaluation): Evaluating the applicant’s potential, knowledge in field based on the submitted documents
- 2<sup>nd</sup> Stage(Interview Evaluation): Evaluating the applicant’s basic knowledge in the field, research ability, language fluency, personality, etc(Interview may be conducted online or face-to-face.)

### ▶ Decision of Successful candidate

- 1<sup>st</sup> Stage: Candidates that will proceed the next stage will be based on the evaluation result.
- Final Candidate: Final Candidates will be selected based on the interview evaluation result.

## ☐ Announcement of Evaluation Result

### ▶ Schedule

Announcement	2026 Spring 1 <sup>st</sup>	2026 Spring 2 <sup>nd</sup>	2026 Fall
1 <sup>st</sup> Stage (Document)	August 21 <sup>st</sup> , 2025 (Fri), 14:00	November 27 <sup>th</sup> , 2025 (Thu), 14:00	May 21 <sup>st</sup> , 2026 (Thu), 14:00
2 <sup>nd</sup> Stage (Interview)	September 23 <sup>rd</sup> , 2025 (Tue), 14:00	December 24 <sup>th</sup> , 2025 (Wed), 14:00	June 23 <sup>rd</sup> , 2026 (Tue), 14:00

### ▶ Important

- All applicants must check the results at UNIST Graduate Admissions Website. Applicants are fully responsible on any disadvantage occurred by failing to check the results on time.  
※ *It is not able to confirm the result by phone or email individually.*
- Final Candidate must register during the scheduled registration period. Admission offer will be withdrawn in case registration is not done on time.

## ❑ Document Submission for Final Candidate after registration

- ▶ Final Candidates must acquire a degree before the first date of class (2026 Spring: Feb 2026, 2026 Fall: August 2026).

### ▶ Document List for verifying Final academic data

	Section	Details
Document list	Domestic Degree	[Original version] Final Degree(Certificate of Graduation), Transcript
	Oversea Degree	[Original form-Copy is prohibited] Apostille or Embassy-verified version of Final Degree(Certificate of Graduation), Transcript
	<b>[Foreign Nationality Only]</b> Financial verification document (in English)	<p><b>[Only for Management Engineering Candidates]</b></p> <p>Submit a 'Bank Certificate of Balance' or 'Bank Statement' in your own bank account with the following amount.</p> <p>1) Master / Combined Master-Doctor : More than 5,500 USD 2) Doctor: More than 4,000 USD</p> <p><b>[Candidates who select Other scholarship]</b></p> <p>Submit a 'Bank Certificate of Balance' or 'Bank Statement' in your own bank account with the following amount.</p> <p>1) For all candidates: More than 13,000 USD 2) Additional Document: 'Confirmation of financial support' from financial sponsor of the candidate</p>
Submission Deadline	Domestic Degree	2026 Spring 1 <sup>st</sup> , 2 <sup>nd</sup> : Till February 25 <sup>th</sup> (Wed), 2026 2026 Fall: Till August 26 <sup>th</sup> (Wed), 2026
	Oversea Degree	<p><b>2026 Spring 1<sup>st</sup>, 2<sup>nd</sup> : Till January 16<sup>th</sup> (Fri), 2026</b></p> <p><b>2026 Fall: Till July 17<sup>th</sup> (Fri), 2026</b></p> <p>* It is possible to submit the documents till <a href="#">August 26<sup>th</sup></a> for Korean Nationalities who does not require a visa.</p>
	Postal Address	Room 202 Bldg 201, 50 UNIST-gil, Ulju-gun, Ulsan, Republic of Korea(44919) UNIST Graduate Admissions Team
	How to submit?	<p>1) Postal: Please write your application number on the envelope</p> <p>2) Visit: Please write your application number on the head of the document.</p> <p>* <i>Working hours: Mon-Fri 9:00-18:00 (Lunch 12:00-13:00)</i></p>

※ Admission offer can be withdrawn in case the documents does not arrive till submission deadline.

#### ※ Domestic Degree

- 1) Document number for original verification must be included.
- 2) Only documents issued within 2 months from the submission deadline is accepted.

#### ※ International(Oversea University) Degree

- 1) Final candidate who graduated(or expected to graduate) from a oversea university must submit an Apostille or Consulate-confirmed version of transcript and final degree(Certificate of Graduation), if not the admission offer will be withdrawn.

- 2) Final Candidate who graduated or studied in China can also submit the related document(中國高等教育學歷查詢報告) that is issued by the Ministry of Chinese Education(English version or notarized English translated version) with an Apostille.
- 3) Since November 2023, China Mainland has become a member of the Apostille Convention. All documents now can be submitted after getting an Apostille.

※ **International candidates must submit all required documents to receive visa documentation to enter Korea till the submission deadline.**

※ Please contact UNIST Graduate Admissions Team for additional questions(+82-52-217-1190, adm-g@unist.ac.kr)

## □ Expected Admission Date

Section	2026 Spring 1 <sup>st</sup>	2026 Spring 2 <sup>nd</sup>	2026 Fall
Date	March 2 <sup>nd</sup> , 2026 (Mon)		August 31 <sup>st</sup> , 2026 (Mon)

※ The date can be changed depending on the academic calendar.

## □ Important Notices for Applicants

- ▶ In case of using online application site and uploading documents, please do not use smart mobile devices such as smartphone, tablet PC, PDA, etc.
- ▶ Please gather all required documents in order and upload them in one PDF file (under 32MB): File name(Application Number)
- ▶ In case of a separate submission of recommendation letter, etc is needed, please contact UNIST Graduate Admissions Team. Additional submission is only allowed within the scheduled timeline.
- ▶ Applicants who graduated(expected to graduate) from an oversea university must submit a transcript, degree related documents in English or a notarized English(or Korean) translated version.
- ▶ Once the online application has been successfully submitted, it cannot be canceled. The application fee and all submitted documents are non-refundable under any circumstances.
- ▶ After the application period closes, the information entered during the application period cannot be changed. However, the student category, department, and degree program selected by the applicant may be changed during the evaluation with the applicant's explicit consent, based on the applicant's academic plans, research interests, and suitability for the major.
- ▶ Applicants who does not submit all required documents within the submission period will be disqualified as incomplete submission of documents.
- ▶ Applicants must check the result of each stage through the UNIST Graduate Admission website. Also in case applicants who passed the first stage fails to appear the second stage(interview process) will be disqualified.
- ▶ If any information in the application or the submitted materials is found to be false or counterfeit, your admission offer will be revoked even after the applicant enter and graduated UNIST.
- ▶ The applicants admission offer will be withdrawn if the applicant does not officially

received the needed degree before the first day of class.

- ▶ Applicants are fully responsible for any disadvantages arising from failing to review or comply with the admissions guidelines. Therefore it is strongly advised to read all instructions and notices carefully before submitting the application.
- ▶ Any other matter related with UNIST Graduate Admission that is not listed in this guideline will be decided with the related committee's decision.

## ☐ Scholarship

※ *Scholarship are subject to be changed and will follow UNIST regulations.*

### 1) Government Scholarship

- ▶ Total tuition waived (Amount: 3,840,000 KRW per semester)
- ▶ Stipend provided
  - Engineering/Natural Science Major
    - Master: More than 9,600,000 KRW annually (800,000 KRW monthly)
    - Doctor: More than 13,200,000 KRW annually (1,100,000 KRW monthly)
    - ※ The stipend listed above is the minimum amount that is provided to students who conduct research and academic activities in the affiliated laboratory. The amount can be differently provided depending on the participating laboratory.
    - ※ Professional-special Graduate School, Management Engineering major students, enrolled students whom exceeded the period of study for each program, recipients of out-of-school scholarship with the amount that exceeds the minimum stipend will be excluded.
  - Management Engineering Major
    - Master: More than 2,880,000 KRW annually (240,000 KRW monthly)
    - Doctor: More than 4,740,000 KRW annually (395,000 KRW monthly)
    - ※ A separate standard of scholarship will be applied to the School of Business Administration (Management Engineering).
    - ※ The stipend listed above is the minimum amount that is provided to students who conduct research and academic activities in the affiliated laboratory. The amount can be differently provided depending on the participating laboratory.
- ▶ Doctoral degree candidates are eligible to be selected as a Technical Research Personnel.
- ▶ On-campus dormitory for graduate students is available. (Out of pocket expenses by students)

### 2) UNIST Scholarship

- ▶ Total tuition compensated (Amount: 3,840,000 KRW per semester)
  - ※ Final candidates will pay the tuition out of their pockets, and will be supported the full amount during the semester by their advisers.
- ▶ Stipend provided (including tuition support)
  - Engineering/Natural Science Major
    - Master: More than 17,280,000 KRW annually
    - Doctor: More than 20,880,000 KRW annually
    - ※ The stipend listed above is the minimum amount that is provided to students who conduct research and academic activities in the affiliated laboratory. The amount can be differently provided depending on the participating laboratory.

- ※ Professional-special Graduate School, Management Engineering major students, enrolled students whom exceeded the period of study for each program, recipients of out-of-school scholarship with the amount that exceeds the minimum stipend will be excluded.
- Management Engineering Major
  - Master: More than 10,560,000 KRW annually
  - Doctor: More than 12,420,000 KRW annually
  - ※ A separate standard of scholarship will be applied to the School of Business Administration (Management Engineering).
  - ※ The stipend listed above is the minimum amount that is provided to students who conduct research and academic activities in the affiliated laboratory. The amount can be differently provided depending on the participating laboratory.
- ▶ Doctoral degree candidates are eligible to be selected as a Technical Research Personnel.
- ▶ On-campus dormitory for graduate students is available. (Out of pocket expenses by students)

### **3) Other Scholarship**

- ▶ Total tuition need to be paid (Amount: 3,840,000 KRW per semester)
- ▶ Stipend will not be provided
- ▶ Doctoral degree candidates are not eligible to be selected as a Technical Research Personnel.
- ▶ On-campus dormitory for graduate students is available. (Out of pocket expenses by students)

## Check List of Documents (제출서류 목록)

Please submit the documents in the following order.

(아래 순서대로 서류를 제출하여 주시기 바랍니다.)

No.	List of Documents (제출서류 목록)	Attachment	
		Yes <input type="checkbox"/>	No <input type="checkbox"/>
1	Application Form: Print out after completing online application (입학원서: 온라인 접수 완료 후 출력)		
2	Check List of Documents (Form 1) (제출서류 목록: 온라인 접수 완료 후 출력) (양식 1)		
3	Transcripts of Bachelor's Degree (학사 성적증명서) * 편입생 지원자는 전적 대학 성적증명서도 포함 제출 필요 * Transfer student must submit transcript from all universities they attended.		
4	Transcripts of Master's Degree (석사 성적증명서)		
5	Diploma(certificate) of Bachelor's Degree (학사 졸업증명서(학위증명서)) * 발급 불가 시, 졸업예정증명서 또는 재학증명서로 대체 제출 가능 * If submission is not possible, please submit 'Certificate of Expected Graduation' or 'Certificate of Enrollment'.		
6	Diploma(certificate) of Master's Degree (석사 졸업증명서(학위증명서)) * 발급 불가 시, 졸업예정증명서 또는 재학증명서로 대체 제출 가능 * If submission is not possible, please submit 'Certificate of Expected Graduation' or 'Certificate of Enrollment'.		
7	Study Plan and Personal Statement (Form 2) (연구계획서 및 자기소개서: 온라인 접수 완료 후 출력) (양식 2)		
8	English Test Report (공인영어성적표: 입학원서에 성적 기재 시 반드시 제출 필요) * 에너지화학공학과 지원자 외에는 공인영어성적이 필수제출 서류가 아니며 선택적 제출 가능 * Foreign applicants should submit one of the official English scores checked in the former stage.		
9	Recommendation Letter from Others(Company, Institution, etc.) (Form 3) (기관 추천서) (양식3, * 일반장학생에 한함) * 회사(기관) 지원을 받는 일반장학생 지원자 제출(양식 직접 작성) * 교육경비(수업료) 본인 부담자는 제출 불필요 * Only for students funded by Others(Company, Institution, etc) * No need to submit for those who pay for education expenses(tuition) by yourself.		
10	Certificate of Employment (재직(예정)증명서) * 일반장학생에 한함 * 증명서 발급 제출이 가능한 해당자만 제출 * 'ICT 융합' 모집단위 지원자는 재직증명서 및 중소기업 확인서 필수 제출 * Only for students funded by Others(Company, Institution, etc) * Submit only those who can issue a certificate * Applicants for the ICT Convergence are required to submit an employment certificate, which is not optional but mandatory		
11	Additional Documents (우수성 입증자료)		

## Study Plan and Personal Statement (연구계획서 및 자기소개서)

Please be sure to write in English.

(8번 문항, 9번 문항, 10번 문항은 반드시 영어로 작성하여 주시기 바랍니다.)

1. Name (성명) \_\_\_\_\_ 2. Application number (수험번호) \_\_\_\_\_

3. Student Classification (학생 구분)

Government / UNIST Scholarship       Academic-Institutional Scholarship

Other Scholarship(Company, Institution, Yourself, etc.)

4. Degree Program (지원 학위)     Master     Combined Master-Doctor     Doctor

5. Application Unit (Major) (지원 모집단위) \_\_\_\_\_ (기재 사항: \_\_\_\_\_)

6. Colleges/Universities Attended (학력 사항)

구분	University (대학명)	Major (전공)	Dates Attended (입학일)	GPA/Scale (평균/만점)
Bachelor (학사)				
Master (석사)				
Doctor (박사)				

7. Research Achievements (연구실적)

No.	Author (저자)	Title (제목)	Journal (출판)	Date Issued (발행일)
1				
2				
3				

**8. Preferred study field in detail (관심연구 분야 - 영문으로 줄 바꿈, 띄어쓰기 포함 500자 이내 작성)**

Briefly describe the research field and direction that you are interested in and want to proceed. (Within 500 characters including line break, spacing in English.)

**9. Study Plan (학업계획서 - 영문으로 줄 바꿈, 띄어쓰기 포함 3,000자 이내 작성)**

Provide a clear and detailed description of your study objectives, and reasons for wanting to pursue it at UNIST. Be specific about your specialized interests in the field. Also Describe the study program you expect to take, and explain how your study plan fits with your previous training and future objectives. (Within 3,000 characters including line break, spacing in English)

**10. Personal Statement (자기소개서 - 영문으로 줄 바꿈, 띄어쓰기 포함 3,000자 이내 작성)**

Please provide a description about yourself, your life or goals.(Within 3,000 characters including line break, spacing in English)

## Recommendation Letter from Others(Company, Institution, etc.) (일반장학생 소속기관장 입학추천서)

### Applicant Information (지원자 정보)

1. Name (성명) \_\_\_\_\_ 2. Application Number (수험번호) \_\_\_\_\_
3. Degree Proposed (지원학위)  Master  Combined Master-Doctor  Doctor
4. Application Unit (Major) (지원 모집단위) \_\_\_\_\_
5. Attachment: Certificate of Employment  
(첨부: 재직증명서 1부, 제출 가능 해당자)

### Institution Information (추천기관 정보)

1. Name of Institute (기관명) \_\_\_\_\_
2. Date of Establishment (설립연월일) \_\_\_\_\_
3. Type of Business (업종) \_\_\_\_\_
4. Sales figures(year) (연간매출액) \_\_\_\_\_
5. Number of Employees (직원 수) \_\_\_\_\_
6. Details (추가 사항) \_\_\_\_\_

The institution will fund all or part of the scholarship of the person above.

(회사(기관)에서 교육경비 일체 또는 일부를 부담하기로 하고 위 사람을  
일반장학생으로 추천합니다.)

Date (날짜): \_\_\_\_\_

Head of the Institution (추천기관장): \_\_\_\_\_ (Signature)

To UNIST President 울산과학기술원 총장 귀하

## <Attachment 2>

### □ UNIST-IBS Neuroscience Inter-Institutional Scholarship Admission

- o Overview: UNIST-IBS Neuroscience Inter-Institutional Scholarship application guideline jointly operated by UNIST Department of Biomedical Engineering and Institute of Basic Science Center for Cognition and Sociality
- o Objective: To promote inter-disciplinary neuroscience research and cultivate global top-notch researchers by establishing an inter-institutional education model between university and research institute
- o Education and Research
  - Degrees: Biomedical Engineering Master's or Ph.D.
  - Curriculum: Students take neuroscience-specialized courses in the UNIST Biomedical Engineering Graduate School Program
  - Credit Exchange: Students can take courses in the neuroscience area at UST (University of Science and Technology) and earn credits
  - Research: Students should conduct inter-disciplinary research at both the UNIST and IBS laboratories and stay at each institute depending on research purposes as well as live in dormitories of each institute
  - Students must stay and work at both IBS and UNIST for certain periods of time
- o Scholarship
  - UNIST-IBS Neuroscience Inter-Institutional program is included in 'UNIST Scholarship' among the category of scholarships
    - ※ (M.S) **21,600,000KRW** or above annually (Ph.D) **25,200,000KRW** or above annually
    - ※ The scholarship seen above is covered the whole tuition fee and stipend  
([M.S] More than KRW **1,800,000/month** [Ph.D] More than KRW **2,100,000/month**)
  - Each institute monthly pays stipend to students based on the share portion of institutes, and ceases the payment if students take time off or drop out of school
  - Payment is continued until the maximum period of each degree
- o Application Procedure
  - Application Procedure: UNIST Biomedical Engineering Graduate School Neuroscience Inter-Institutional Scholarship
  - Degrees: Master's, Ph.D., Combined Master's and Ph.D
  - Capacity: Within the capacity of UNIST Biomedical Engineering UNIST

## Scholarship in each year

- Application process: Application to 'UNIST-IBS Neuroscience Inter-Institutional Scholarship' within the category of the Department of Biomedical Engineering Academic-Institutional Scholarship according to UNIST Graduate School Admission Guideline
- Admission process will follow the UNIST Graduate Students admission process

### ※ **Inquiry:**

- College of Information and Biotechnology Academic & Students Affairs Team (E-mail: [ib\\_admission@unist.ac.kr](mailto:ib_admission@unist.ac.kr))
- Department of Biomedical Engineering (E-mail: [bme\\_admin@unist.ac.kr](mailto:bme_admin@unist.ac.kr))

## <Attachment 4>

### 「 ICT Convergence Master's Degree」 Admission (Recruitment for employees of small and medium-sized enterprises in Ulsan-Gyeongnam-Busan region)

#### o Overview

- Purpose of program: To solve the shortage of advanced talents in the ICT field, a leading area of the Fourth Industrial Revolution within the local region, this program is designed to offer joint research and engineering master's degree support to local employees.
- The program ultimately cultivates ICT professionals with master's degree who are equipped with both convergence and practical skills for the field by offering customized courses and education that reflect the demands and requirements of participating companies.

#### o Education and research

- Major and Degree: Master of Science in ICT Convergence
- Completion Requirement: Completion of UNIST ICT Convergence Master's Degree Program curriculum
- Research Environment: Research projects in the field of biosignal data are continuously conducted at the institution.

#### o Scholarship Support

- Tuition: The program center supports up to 90% of the self-payment portion of the tuition fee.
- Small-sized enterprises: 90% support of the tuition, Medium-sized enterprises: 80% support of the tuition fee
- Graduates in the master's degree program are required to work for at least one year after obtaining their degree.
  - ※ Tuition Fee: KRW 10,000,00 per year (the applicant pays first, and the center pays back)
  - ※ Maintaining employment during the master's program is mandatory.

#### o Admission and Evaluation Process

- Application Procedure
  - 1) Application unit ICT Convergence(ICT Convergence Master's Degree)
  - 2) Qualification: Employees of small and medium-sized enterprises in the Ulsan, Gyeongnam, Busan region(Bachelor's degree holder)
  - 3) Quota: Max. 25 students per year(Other scholarship)
  - 4) Select application unit: ICT Convergence and Other scholarship
  - 5) The admission and evaluation procedure are identical to UNIST Graduate School's admission process.

※ Changing major during the program is not allowed because the program is specialized in employees.

※ Dropout during the program should return the support fund.

※ Further inquiry

- Academic & Students Affairs Team (☎ 052-217-1846, [ib\\_admission@unist.ac.kr](mailto:ib_admission@unist.ac.kr))

- 5T-SPACE Research Center for Regional Intelligence Innovation Talent Development Project (☎ 052-217-3271, [help-ict@unist.ac.kr](mailto:help-ict@unist.ac.kr))

- Department of Electrical Engineering (☎ 052-217-3624, [ee\\_unist@unist.ac.kr](mailto:ee_unist@unist.ac.kr))

## <Attachment 6>

### UNIST-Korea Institute of Ceramic Engineering and Technology (KICET) Inter-Institutional Scholarship Admission

#### o Overview

- This program aims to train researchers in the ceramic field.
- Students in this program should complete the degree program(Master, Doctor, Combined master-doctor) at UNIST as KICET student researchers.

#### o Education and research

<b>Department</b>	<ul style="list-style-type: none"><li>· Department of Civil, Urban, Earth and Environmental Engineering (<b>CUEEn</b>)</li><li>· Department of Materials Science and Engineering (<b>MSE</b>)</li><li>· Graduate School of Semiconductor Materials and Devices Engineering (<b>SE</b>)</li><li>· School of Energy and Chemical Engineering (<b>ECHE</b>)</li></ul>
<b>Degree</b>	Master of Science in Engineering or Doctor of Philosophy in Engineering
<b>Curriculum</b> (Majors and Coursework)	Based on the graduate-level curriculum of the majors offered at UNIST. <ul style="list-style-type: none"><li>· Urban Infrastructure Engineering</li><li>· Disaster Management Engineering</li><li>· Environmental Science Engineering</li><li>· Materials Science and Engineering</li><li>· Semiconductor Materials and Devices Engineering</li><li>· Energy and Chemical Engineering</li></ul>
<b>Research</b>	Students should conduct inter-disciplinary research at both UNIST and KICET.

#### o Scholarship

- After admission to UNIST, applicants are classified as “Others Scholarship” students.
  - ※ **Students are required to pay the full tuition to UNIST and are not eligible for any scholarships, student support funds, or research stipends from UNIST.**
  - ※ **KICET provides labor costs to student researchers.** (The amount of labor costs shall be determined in accordance with Article 13 of the KICET Student Researcher Support Guidelines.)
  - ※ **Applicants must select Academic-Institutional Scholarship under the student classification category when applying to UNIST.**

## o Application procedure

<b>Eligibility</b>	Those who meet UNIST graduate admissions eligibility requirements
<b>Caution</b>	<ul style="list-style-type: none"> <li>· Applicants must select “<i>Academic – Institutional Scholarship</i>” as the student classification category.</li> <li>· In addition to applying to UNIST, applicants are required to apply separately for the Student Researcher recruitment program at KICET <ul style="list-style-type: none"> <li>※ Please refer to the Notices section on the KICET official website.</li> <li>※ Final admission is granted only to applicants who pass both the UNIST admission screening and the KICET Student Researcher eligibility review.</li> <li>※ The final admission results will be announced by UNIST</li> </ul> </li> </ul>
<b>Majors</b>	<ul style="list-style-type: none"> <li>· Urban Infrastructure Engineering (CUEEn)</li> <li>· Disaster Management Engineering (CUEEn)</li> <li>· Environmental Science Engineering (CUEEn) ※ exclude Water-Energy Nexus</li> <li>· Materials Science and Engineering (MSE)</li> <li>· Semiconductor Materials and Devices Engineering (SE)</li> <li>· Energy and Chemical Engineering (ECHE)</li> </ul>
<b>Degree Program</b>	Master’s, Doctoral, and Combined Master’s-Doctoral Programs
<b>Quota</b>	00
<b>Documents to be submitted</b>	<p>Same as required by the UNIST Graduate Admission Guidelines.</p> <ul style="list-style-type: none"> <li>※ Recommendation letter from company or institute is not required</li> <li>※ Recommendation letter from the advisor(undergraduate or master’s) may be submitted</li> </ul>
<b>Inquiry</b>	<ul style="list-style-type: none"> <li>※ CUEEn Administrative Office: ☎ 052-217-3644, cueen_admission@unist.ac.kr</li> <li>※ MSE Administrative Office: ☎ 052-217-3523, mseadmission@unist.ac.kr</li> <li>※ SE Administrative Office: ☎ 052-217-6352, se@unist.ac.kr</li> <li>※ ECHE Administrative Office: ☎ 052-217-3557, etheadmission@unist.ac.kr</li> </ul>